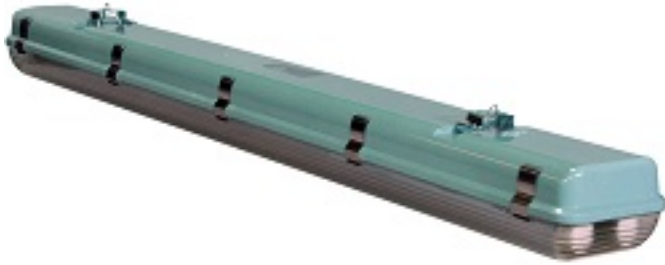


**Dimmable 46 Watt Vapor Proof LED 4 Foot Light for Outdoor Applications - 5750 Lumens**

Part #: [GVP-48-2L-LED-D](#)



**Made in the USA**

The GVP-48-2L-LED-D from Larson Electronics is similar to our popular explosion proof LED fixtures and provides an LED alternative to dimmable fluorescent fixtures that provides longer lamp life and higher performance. These two LED tube lamp fixtures produce more output with longer lamp life and are vapor proof and impact/vibration resistant.

*\*Please note that this unit is vapor proof and not approved for use in hazardous locations.\**

The GVP-48-2L-LED-D is equipped with two specially designed 23 watt LED T8-series bulbs which produce 2,875 lumens each and have a correlated color temperature of 4500K or 5600K. The GVP-48-2L-LED-D, four foot long, two lamp dimmable LED light fixture is designed for those who wish to replace or upgrade from dimmable fluorescent fixtures and offers better light output and longer lamp life with reduced maintenance costs. With no ballast and solid state LED light tubes, this fixture draws less than 0.5 amps of power while offering durability and versatility that common fluorescent fixtures cannot match.

We have eliminated the ballast box normally associated with fluorescent fixtures which reduces overall weight and creates a slimmer unit profile. There is no ballast in this unit and the included LED lamps have a 50,000+ hour service life, both of which result in extreme efficiency and greatly reduced maintenance costs. The solid state design of the LED lamps give this fixture superior resistance to damage from vibration, extremes in temperature, and a lamp service life over twice that of standard fluorescent bulbs.

The 23 watt LED lamps produce the same illumination as standard T8 fluorescent bulbs. The GVP-48-2L-LED-D operates on 90-132 volts or 220-240 volts AC 50/60 Hz and is dimmable with dimmer switches such as the Leviton 6633-PLW. Integral aluminum heat sink tube backings provide cool operation and long LED life, while a simple latching system seals the lens cover to the housing and provides easy access for re-lamping.

**LED Benefits:** Unlike gas burning and arc type lamps that have glass bulbs, LEDs have no filaments or fragile housings to break during operation and/or transportation. Instead of heating a small filament or using a combination of gases to produce light, light emitting diodes (LEDs) use semi-conductive materials that illuminate when electric current is applied, providing instant illumination with no warm up or cool down time before re-striking. Because there is no warm up period, this light can be cycled on and off with no reduction in lamp life.

LED lights run at significantly cooler temperatures than traditional metal halide and high pressure sodium lights and contain no harmful gases, vapors, or mercury, making them both safer and more energy efficient. No extra energy is wasted in cooling enclosed work areas due to external heat emissions from bulb type lights, and the operator risks associated with traditional lighting methods, such as accidental burns and exposure to hazardous substances contained in the glass bulbs, are eliminated. In addition, LEDs are also safer for the environment as they are 100% recyclable, which eliminates the need for costly special disposal services required with traditional gas burning and arc type lamps.

This unit is designed to be either surface mounted or hung from cable or chain and includes built in mounts. The GVP-48-2L-LED-D light fixture is ideal for indoor-outdoor applications and suitable for use as general area lighting, shop lighting, work space lighting, garage and warehouse lighting, and anywhere a rugged and dependable fixture with high output and efficiency is needed. This light comes with a multi-purpose mounting bracket that can be used for a direct surface mount or reversed and used for chain hanging the unit.

At Larson Electronics, we do more than meet your lighting needs. We also provide replacement, retrofit, and upgrade parts as well as industrial grade power accessories. Our craftsmen can custom build any lighting system and/or accessories to fit the unique demands of your operation. A commitment to honesty, quality, and dependability has made Larson Electronics a leader in the lighting and electronics business since 1973. Contact us today at 800-369-6671 or message sales@larsonelectronics.com for more information about our custom options tailored to meet your specific industry needs.

**Specifications / Additional Information****GVP-48-2L-LED-D Vapor Proof LED Light****Lamp Type:** 2 LED Tubes**Dimensions:** 49-3/4"L x 5-7/8"W x 4-3/16"H**Weight:** 5 lbs**Total Watts:** 46 Watts**Amperage:** 0.38A @ 120V - 0.19A @ 240V**Voltage:** 90-132V AC or 220-240V AC, 50/60Hz**LED Lamp Life Expectancy:** 50,000+ Hours**Beam Angle:** 160°**Features**

High Output T8 Style LED Tube Lamps

50,000+ Hour LED Life Span

Reduced Energy Consumption With Improved Output

Vapor Proof

Vibration Shock Resistant

Approved for Wet Locations

LEL Approved

Dimmable

**Ambient Temp:** -25°C to +40°C

**Efficiency:** 125 Lm/W

**Total Lumens:** 5750

**Color Temp:** 4500K or 5600K

**Dimmable:** Yes

**Mounting:** Surface or Chain Standard

**Wiring:** Pigtail

**Power Efficiency:** 90%

**Power Factor:** >0.95

**-Scroll Down to Purchase-**

**Special Orders- Requirements**

Contact us for special requirements

**Toll Free:** 1-800-369-6671

**Intl:** 1-903-498-3363

**E-mail:** [sales@larsonelectronics.com](mailto:sales@larsonelectronics.com)

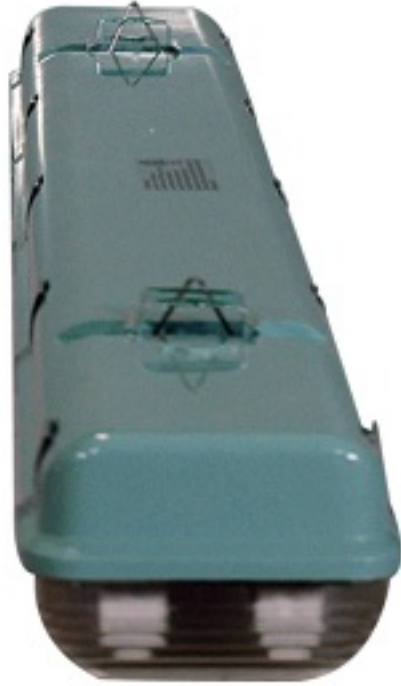
[Part #: GVP-48-2L-LED-D \(72915\)](#)

Options:

GVP-48-2L-LED-D- VOLTAGE - COLOR TEMP

Example: GVP-48-2L-LED-D-120V-56

VOLTAGE		COLOR TEMP	
120V	-120V	5600K	-56
240V	-240V	4500K	-45











Links (Click on the below items to view):

- [Dimensional Drawing](#)
- [Manual](#)
- [IES](#)
- [STEP](#)
- [Hi-Res Image 1](#)
- [Hi-Res Image 2](#)
- [Hi-Res Image 3](#)
- [Hi-Res Image 4](#)
- [Hi-Res Image 5](#)