

1 kVA Outdoor Rated DC Transformer - Input 120/240VAC on 50/60Hz - DC Output - Weatherproof

Part #: TX-1000-DC

**Made in the USA**

The Larson Electronics TX-1000-DC 1kVA power transformer converts 110-120/220-240V AC at 50/60hz to 12V DC or 24V DC and is ideal for powering 12 or 24 volt DC based lights and equipment.

This 1kVA, coil based power transformer accepts 120-240V AC electrical current and provides 12 volts DC at 83 amps or 24 volts DC at 41 amps via a 1 foot SOOW cord depending upon the chosen configuration. The transformer in this unit is encased within a weatherproof NEMA 3R rated enclosure and produces minimal interference with the wireless radio receivers often found in remote controlled lighting equipment such as Golight wireless remote controlled spotlights.

The primary input on this unit accepts either 120 or 240V AC at 50/60 Hz depending upon configuration, and is connected through a 5 foot SOOW cord with a choice of general area cord cap. Output from this unit delivers 12 Volts DC at 83 amps or 24 Volts DC at 41 amps depending upon the unit's configuration. This unit is preconfigured for specific current input and output before shipping. Please select your desired current voltages from the drop down boxes below when ordering.



[Click Photo to Enlarge](#)



[Click Photo to Enlarge](#)



[Click Photo to Enlarge](#)



[Click Photo to Enlarge](#)

Some power transformers produce significant radio frequency interference which can cause erratic operation of radio controlled devices. This NEMA 3R encapsulated transformer is ideal for use with wireless remote controlled Golight models GL-3049H, RCL360HID and any other equipment that relies on radio receivers for remote operation when mounted 2 feet or more from such equipment. This heavy duty unit measures 25" tall x 14" wide x 11" deep, is surface mountable, and provides a reliable and low interference low voltage power solution for equipment requiring 12 or 24V DC.

[Click Photos to Enlarge](#)



5-15 Straight Blade Plug
15 Amp / 125V Rated



L5-15 Twist Lock Plug
15 Amp / 125V Rated



L6-15 Twist Lock Plug
15 Amp / 250V Rated



UK BS1363 Straight Blade Plug
13 Amp / 250V Rated / Internal Fuse



Intl Schuko 2-Pin Plug
16 Amp / 250V Rated / Grounded



Flying Leads / Pigtail Wires

Wiring/Plug: This general use high bay LED light fixture is equipped with 10 feet of 16/3 chemical and abrasion resistant SOOW cord that is fitted with an industrial grade cord cap for easy connection to common wall outlets. Plug options include standard 5-15 15 amp straight blade plug for 110V wall outlets with ground, standard 6-15 15 amp straight blade plug for 220-240V wall outlets with ground, NEMA L5-15 15 amp twist lock plug for 125V twist lock outlets, NEMA L6-15 15 amp twist lock plug for 240V twist lock outlets, British BS1363 13 amp fused 3-blade plug for United Kingdom outlets, or a two pin 16 amp rated Schuko plug with ground contact and socket for European outlets up to 250V. Alternatively, we can provide flying leads with no plug for hard wire applications or for operators who prefer to wire in user provided cord caps. Please choose pigtail option below for flying leads with no plug.

At Larson Electronics, we do more than meet your lighting needs. We also provide replacement, retrofit, and upgrade parts as well as industrial grade power accessories. Our craftsmen can custom build any lighting system and/or accessories to fit the unique demands of your operation. A commitment to honesty, quality, and dependability has made Larson Electronics a leader in the lighting and electronics business since 1973. Contact us today at 800-369-6671 or message sales@larsonelectronics.com for more information about our custom options tailored to meet your

specific industry needs.

Specifications / Additional Information

TX-1000-DC Power Transformer

Line In: 120/240V AC @ 50/60Hz

Line Out: 12V DC or 24V DC

Max Ripple/Noise: 150mVp-p

KVA: 1

Rating: NEMA 3R Enclosure

Dimensions: 25"H x 14"W x 11"D

Wiring: Input - 5' SOOW Cord, Output - 1' SOOW Cord

Cord Cap Options: 5-15 Straight, 6-15 Straight, L5-15 Twist, L6-15 Twist, UK BS1363, Intl. Schuko, Pigtail

Mounting: Surface Mount

Special Orders- Requirements

Contact us for special requirements

Toll Free: 1-800-369-6671

Intl: 1-903-498-3363

E-mail: sales@larsonelectronics.com

[Scroll Down to Purchase](#)

[Part #: TX-1000-DC \(147108\)](#)

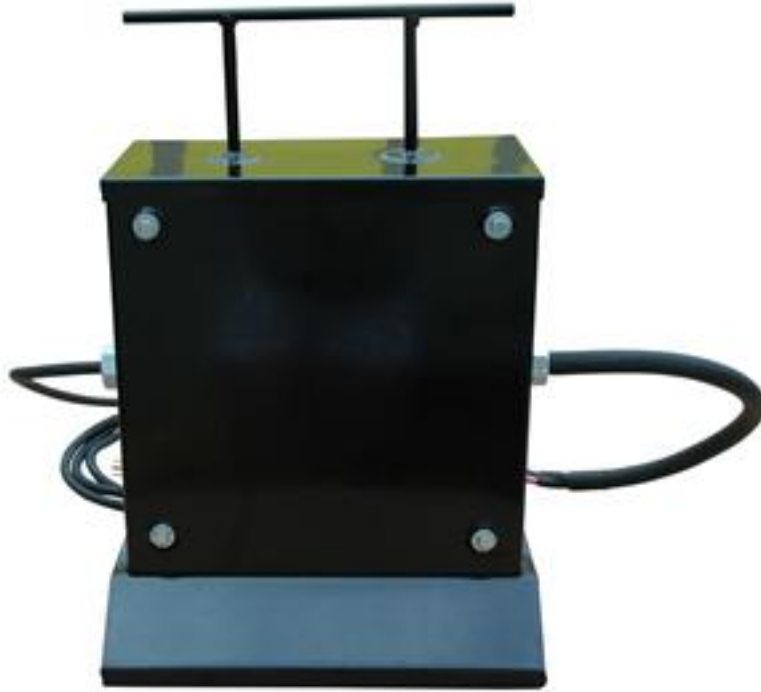
Options:

TX-1000-DC- OUTPUT VOLTAGE - CORD CAP

Example: TX-1000-DC-12VDC-5.15

OUTPUT VOLTAGE		CORD CAP	
12VDC	-12VDC	5-15 Straight	-5.15
24VDC	-24VDC	6-15 Straight	-6.15
		L5-15 Twist	-L5.15
		L6-15 Twist	-L6.15
		UK BS1363	-BS1363
		Intl. Schuko	-Schuko
		Pigtail	-Pigtail







Links (Click on the below items to view):

- [Hi-Res Image 1](#)
- [Hi-Res Image 2](#)
- [Hi-Res Image 3](#)
- [Hi-Res Image 4](#)