

Explosion Proof LED Light - Equivalent to 100 - 150 Watt Metal Halide - Class 1 Division 2

Part #: EPLC2-LED-150W

**Made in the USA**

The EPLC2-LED-150W LED hazardous area light fixture from Larson Electronics produces 5,288 lumens of light capable of illuminating an area approximately 3,500 square feet in size. Weather proof and U.L. listed for marine use, this LED fixture is an ideal choice for industrial applications and use in enclosed spaces.

The durable EPLC2-LED-150W LED 67 watt LED fixture from Larson Electronics is approved for use in wet marine locations and is ideal for industrial applications, confined spaces, hazardous work areas and Class 1 Div 2 areas where a powerful and durable floodlighting solution is needed. This high output LED light fixture is designed to replace 100 - 150 watt metal halide light fixtures within hazardous locations. The lamp housing and adapter are weatherproof and constructed of non-sparking aluminum with epoxy powder coat featuring a heavy duty aluminum heat sink. This lamp carries a long lamp life rating of 60,000 hours and a fast hot re-strike capability, reducing downtime and replacement costs. This unit is available in stanchion, pendant, ceiling and wall mount versions.

[Click Photo's to Enlarge](#)[3/4" Ceiling, Wall or Pendant Mount](#)[1 1/2" Stanchion Mount](#)

This hazardous area light is U.L. rated Class 1 Division 2, Groups A, B, C and D, UL1598 and UL1598A listed for outdoor marine use. The integral multi-tap is protected within the weatherproof housing and can be operated on 120, 208, 240 and 277 Volts. This lamp is suitable for use in confined spaces and areas where wet marine conditions exist. The multi-purpose floodlight design of this fixture makes it a popular choice for industrial and marine applications regardless of whether the locations are designated hazardous or not. The non-sparking aluminum fixture body is epoxy powder coated for durability and corrosion resistance.

Wiring: This light is highly durable and produces 5,288 lumen light output in a wide flood pattern. Wiring is through a convenient ¾ inch NPT conduit entrance. Three-conductor No. 14 cable (with 90° C minimum insulation) is recommended for making electrical connections. Wiring is accomplished through the wiring enclosure provided on the fixture. The box is provided with a size 3/4-in. NPT threaded conduit opening. Wiring methods must comply with NFPA 70 (The National Electrical Code).

Suggested applications: Locations requiring continuous and consistent light levels in extreme ambient temperatures, ship yards, boat yards, plants, tanks, vessels, fuel cells, barges and oil field applications.

Made in the USA Quality

1. High Efficiency LED lamp.
2. 78.92 Lumens per Watt.
3. Rugged Die Cast Aluminum Lamp Housing.
4. Shock Resistant Tempered Glass.
5. Heavy Duty Gasket.
6. No warm-up or cool-down.
7. Low Maintenance.
8. Corrosion Resistant Materials.
9. Stainless Hardware.
10. UL Approved for Marine Environments.
11. Instant on and off.
12. Easy installation.

Superior LED Benefits

1. 60,000 hour lifespan.
2. Can SAVE 67% or more on energy.
3. Qualifies retrofit projects for financial incentives, including utility rebates, tax credits and energy loan programs.
4. Reduces energy use and prolongs life-spans of peripheral cooling units (A/C, refrigeration)
5. 100% recyclable.
6. Contains no mercury or other hazardous substances.
7. No UV light, infrared radiation or CO2 emissions.
8. Qualifies buildings for LEED and other sustainable business certifications.
9. Bright, even light maintains consistent color over time.
10. Instant on/off – No flickering, delays or buzzing.
11. Very good color rendering.
12. Vibration/impact resistant.
13. Significantly cooler operation.
14. Less frequent outages, higher output improves workplace safety.

Specifications / Additional Information**EPLC2-LED-150W Explosion Proof LED****Lamp Type:** LED**Lamp Dimensions:** 21 1/2"-L, 13"-OD,**Total Lumens:** 5,288**Watts:** 67 Watts**Lumens Per Watt:** 78.92**LED Light Color:** Cool White 5000K - 70 CRI, Warm White 3000K - 80 CRI**LED Life Expectancy:** 60,000 Hours CRI**Voltage:** 100-277 Volts**Lighting Configuration:** Flood Pattern**Mounting:** 3/4" Ceiling, Wall or Pendant Mount, 1 1/2" Stanchion Mount**Wiring Hub:** 3/4" NPT (1-1/2" NPT on Stanchion)**Temp Rating:** T4A-T5**Ambient Temperature:** -40°C to +55°C**U.L. Ratings**

Class 1, Division 2 Groups A,B,C,D

Class 1, Zone 2, nA nR

Class 2, Division 1 & 2, Groups E,F,G

Class III

Zone 21 tb

Simultaneous Presence

Wet Location, Type 4X, IP66

UL 1598 Luminaries, UL1598A Marine

cUL Listed to CSA Standard CSA C22.2 No. 137

Dark sky compliant

UL 844

Special Orders- Requirements

Contact us for special requirements

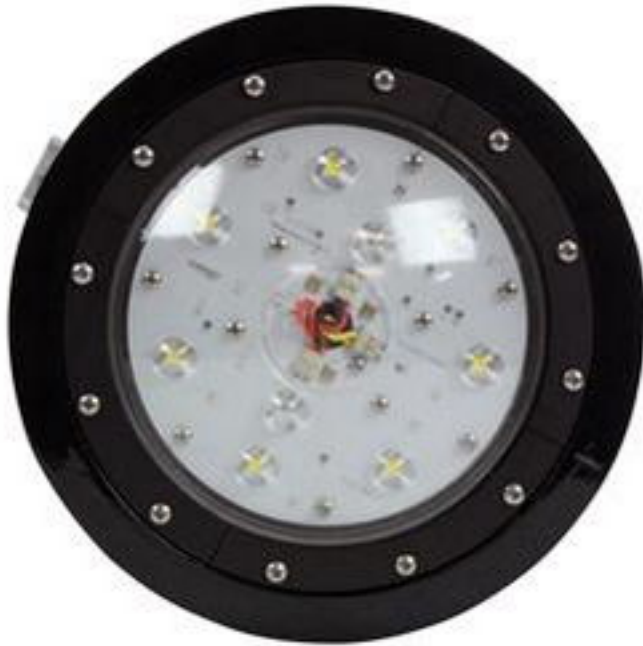
Toll Free: 1-800-369-6671**Intl:** 1-214-616-6180**Fax:** 1-903-498-3364**E-mail:** sales@larsonelectronics.com[Scroll Down to Purchase-](#)[This product does not qualify for free shipping.](#)[Part #: EPLC2-LED-150W \(69091\)](#)

Options:

EPLC2-LED-150W- MOUNTING - COLOR TEMP

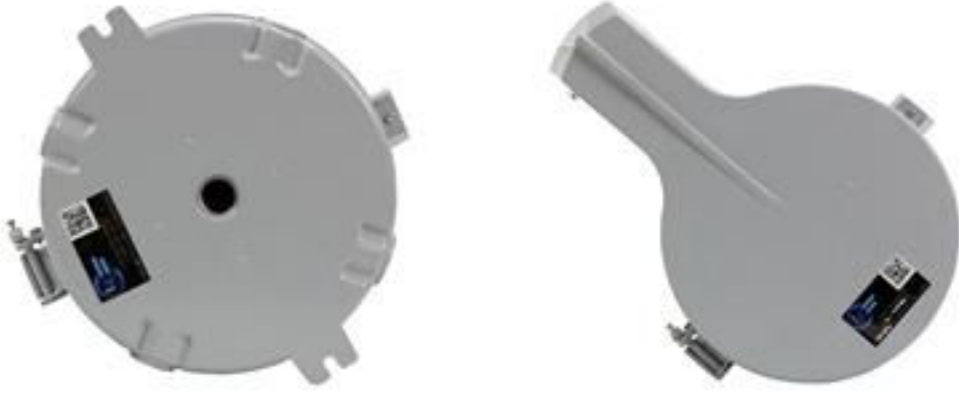
Example: EPLC2-LED-150W-STCH-WW

MOUNTING		COLOR TEMP	
Stanchion	-STCH	Warm White	-WW
Pendant	-PND	Cool White	-CW
Wall	-WAL		
Ceiling	-CLG		









Links (Click on the below items to view):

- [Manual](#)
- [WiringDiagram](#)
- [Hi-Res Image 1 -Explosion Proof LED Light - Equivalent to 150 Watt Metal Halide](#)
- [Hi-Res Image 2 -Explosion Proof LED Light - Equivalent to 150 Watt Metal Halide](#)
- [Hi-Res Image 3 -Explosion Proof LED Light - Equivalent to 150 Watt Metal Halide](#)
- [Hi-Res Image 4 -Explosion Proof LED Light - Equivalent to 150 Watt Metal Halide](#)
- [Hi-Res Image 5 -Explosion Proof LED Light - Equivalent to 150 Watt Metal Halide](#)
- [Hi-Res Image 6 -Explosion Proof LED Light - Equivalent to 150 Watt Metal Halide](#)
- [Hi-Res Image 7 -Explosion Proof LED Light - Equivalent to 150 Watt Metal Halide](#)
- [Hi-Res Image 8 -Explosion Proof LED Light - Equivalent to 150 Watt Metal Halide](#)
- [Hi-Res Image 9 -Explosion Proof LED Light - Equivalent to 150 Watt Metal Halide](#)