

Larson Electronics Power Distribution Substation - 45KVA - 150A Main - 8 X 120V Outlets - 2 X 208Y

Part #: MPD-45K-150MB-8X120-2X208Y

**Made in the USA**

This Larson Electronics Power Distribution Substation converts 480 VAC three phase primary electrical current to three phase 208Y AC and 120VAC single phase on the secondary. This heavy duty power distribution system includes a 60 amp 3 phase fusible disconnect for incoming 480V three phase power. This model is designed for use for both linear (motor) and non-linear loads (lighting, computers, etc.). For that reason, we deliver 120V and 208Y on the secondary and provide a neutral.

****PLEASE NOTE: ANY FREE SHIPPING OFFERS DO NOT APPLY TO POWER DISTRIBUTION PANELS, TRANSFORMERS, OR SUBSTATIONS****

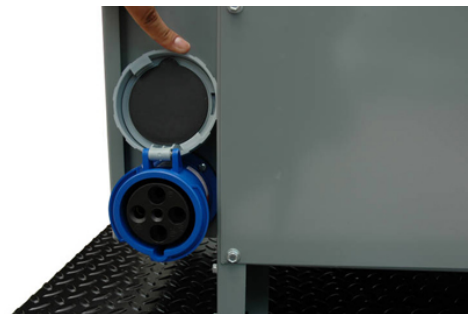
This portable transformer is designed to accept 480V 3-phase power which it then steps down to 120/208Y VAC with a 45KVA transformer. The power distribution system on this portable substation makes 120VAC available via eight 20 amp, 120 Volt GFCI outlets and 208Y 3-phase available via two Hubbell 30 amp, 250V, 3-phase, 3P 4W weatherproof outlets.



[Click Photo to Enlarge](#)



[Click Photo to Enlarge](#)



[Click Photo to Enlarge](#)

The load center on this unit is mounted within a NEMA 3R enclosure for protection against accidental contact, rain, dust, splashing water, and sprayed water. The transformer is mounted on a 1/8" thick diamond plate mounting platform and the load center/distribution assembly is mounted to the standard 2 inch square carbon steel tubing frame, resulting in an extremely stable, durable, and well protected power distribution platform. This model is equipped with 4 heavy duty polyurethane 6 inch casters, 2 forklift pockets and a top located lifting eyelet which allows easy lifting with cable or chain hooks.

Applications:

This power distribution system is ideal for indoor or outdoor use and applications including but not limited to, construction sites, plant maintenance, plant turnarounds, hazardous location operations, shows, exhibits, and shipyard operations. These power transformers are popularly used in applications where external power sources are often necessary and work well in combination with explosion proof lights and equipment.

Larson Electronics is a manufacturer and as such can build portable transformer systems to your specifications. Although we carry several models of power distribution transformers, we can deliver custom ordered units almost as quickly as our prebuilt units. If this model does not meet your needs, please contact us at 1-800-369-6671 or sales@larsonelectronics.com to discuss your specific requirements.

Transformer is grounded to the frame and we provide a grounding lug on the frame for the earth ground.

~Please check all motor loads for dual rated motors that will work 208 or 240.~

Specifications / Additional Information

MPD-45K-150MB-8X120-2X208Y Power Distribution Panel

Line In: Three Phase 480 VAC (Supply Cord Optional)

Disconnect: 60 amp, 3 Phase Fused Disconnect

Outlets: 8 GFCI Protected 20 amp, 120 Volt, weather protected receptacles and two 30 amp, 3 pole 250V receptacles

Load Center: 150 amp Main Breaker, NEMA 3R, 8 X 20 amp, 125 Volt single pole breakers and 2 X 30 amp breakers

Transformer: 45KVA 480V three phase to 120/208Y

Dimensions: W-48" X L-48" X H-48"

Portability: Forklift pockets and pick eye

Transport: 6 inch locking polyurethane casters

Ground: Mechanical Ground

Weight: 550lbs

Features:

Max Amps Output: 12 5amps 120-208Y 3 Phase

Max Amps Input: 54 Amps @ 480V 3 Phase

Max Primary OCP: 135A MCB NEX Table 450.3(B)

Ratings

UL 1640 Portable Power-Distribution Equipment

NEMA 3R Indoor or Outdoor Use

Made in the USA

Special Orders- Requirements

Contact us for special requirements

Toll Free: 1-800-369-6671

Intl: 1-903-498-3363

E-mail: sales@larsonelectronics.com

Larson Electronics manufacture a wide variety of custom power distribution systems. The pictures displayed for this unit are a general representation of form factor and may not accurately represent this exact configuration in every detail due to being custom builds. The specifics for this configuration are listed in the specification table and one-line diagram.

All grounding shall comply with state and local codes and meet the minimum requirements of the National Electronic Code section 250

[Scroll Down to Purchase](#)

This product does not qualify for free shipping.

Part #: MPD-45K-150MB-8X120-2X208Y (68724)

Links (Click on the below items to view):

[- Manual](#)