

Class 1 Division 2 Fluorescent LED Light for Corrosion Resistant Requirements (Saltwater)

Part #: HALP-48-1L-LED

**Made in the USA**

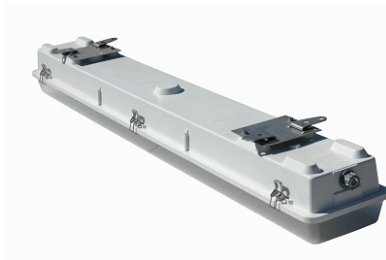
The Larson Electronics HALP-48-1L-LED Hazardous Area LED Light Fixture is U.S./Canada U.L. approved Class 1 Division 2 Groups A, B, C and D - UL 1598A listed, has a T4A temperature rating and is specifically designed to handle the rigors of wet and corrosive marine environments.

The HALP-48-1L-LED hazardous area LED light fixture is designed for use in wet areas and saltwater-marine environments where corrosion resistance is critical to equipment longevity and safety. This Class 1 Division 2 rated fixture is constructed of non-corrosive materials including a polyester housing reinforced with glass fiber, a poured in gasket for reliable sealing and an impact resistant acrylic diffuser. Corrosion resistant stainless steel latches secure the lamp cover to the housing and provide a firm lock against the poured in seal to prevent drips and water intrusion. This fixture is UL 844 rated and Class 1 Division II, Groups A, B, C, D approved.

The HALP-48-1L-LED also carries a UL 1598A outdoor marine rating and meets US Coast Guard specifications. This lamp offers the extreme durability, high efficiency and long lamp life of high power LEDs in a proven hazardous location fixture design.



[Click Photo to Enlarge](#)



[Click Photo to Enlarge](#)



[Click Photo to Enlarge](#)

The HALP-48-1L-LED is equipped with our specially designed LED T-series bulbs which produce nearly 15% more foot candles of illumination at 8 feet as compared to standard T5 lamps when measured with an Extech light meter. The 24 watt LED lamps produce more illumination than standard T5 bulbs, but draw only 1/3rd of current. The HALP-48-2L-LED is multi-voltage (not multi-tap) and works on the following voltages: 120 Volt 60 HZ, 220 Volt 50 HZ, 240 Volt 60 HZ, 277 Volts 60 HZ. This fixture is ideal for open air hazardous locations where flammable chemical/petrochemical vapors may be occasionally encountered.

NOTE ON LAMPS: All hazardous location lights are shipped with bulbs. One 24 watt LED tube bulb with a color temperature of 5300K and a 50,000 hour life span come equipped with this fixture.

Standard Flange Brackets: Flange type stainless steel mounts attached at each end of the fixture enables it to be simply secured to any surface. The mounts provide some shock absorbency protection while enabling the user to simply mount the fixture with the through-hole taps that protrude on each side of the fixture. The mounting holes are 36 9/16 inches on center apart along the top of this hazardous location light. The mounting holes are 7 inches on center across the top of the light.

Suggested Applications: The HALP-48-1L-LED is designed for marine, wet, damp locations where corrosion resistant fluorescent lights are required. This includes petrochemical facilities, lubrication pits, oil drilling rigs, crew quarters, solvent/cleaning areas, water treatment areas, processing plants and marine loading docks.

Made in USA Quality

1. Each unit dielectrically tested.
2. Fixture arrives assembled and lamped to reduce installation time and cost. Flange type stainless steel mounts attached at each end of the fixture enables it to be simply secured to any surface.
3. Fixture housing constructed of glass fiber reinforced polyester.
4. No ballast box. No ballast to replace. We simply run the black wire to one end of the bulb and white wire to the other.
5. Relamping done via 6 stainless steel snap locking latches which enables the operator to remove the door and access the lamps.
6. Lamp cover-diffuser constructed of high impact acrylic for corrosion resistance and lamp protection. .
7. 1/2" or 3/4", threaded access hole for wiring conduit.

Superior LED Benefits

1. 50,000 hour lifespan.
2. Can SAVE 50% or more on energy.
3. Qualifies retrofit projects for financial incentives, including utility rebates, tax credits and energy loan programs.
4. Reduces energy use and prolongs life-spans of peripheral cooling units (A/C, refrigeration)
5. 100% recyclable.
6. No toxins-lead, mercury.
7. No UV light, infrared radiation or CO2 emissions.
8. Qualifies buildings for LEED and other sustainable business certifications.
9. Bright, even light maintains consistent color over time.
10. Instant on/off – No flickering, delays or buzzing.
11. Very good color rendering.
12. Vibration/impact resistant.
13. Significantly cooler operation.
14. Less frequent outages, higher output improves workplace safety.

Specifications / Additional Information

HALP-48-1L-LED Hazardous Area

UL Listing: United States - Canada

Dimensions: W-8.25" L-52" H-7"

Weight: 8 Lbs

Total Watts: 24 watts

Voltage: 120V-60hz 220V-50hz 240V-60hz 277V-60hz

Lamp Life Expectancy: LED T-Series 50,000 Hours

Efficiency: LED T-Series 90 Lumens per Watt

Temp Range: T4A Rated -30 C to 85 C

Beam Angle: 150 degrees

Color Temp: 5300K-

Mounting: Flange type stainless steel

Wiring Hub: 1/2" or 3/4" threaded

Warranty: YES- 3 Years*

U.L Approval: [U.S Certificate](#) [Canada Certificate](#)

Minimum Operating Temp: -30 C

Maximum Case Temp: 90 C

U.L. Ratings

Class I Division 2, Groups A, B, C, D

Class II, Division 2, Groups F, G

UL 844

UL 1598A Marine Type (Salt water)

California Title 24 Compliant

Special Orders- Requirements

Contact us for special requirements

Toll Free: 1-800-369-6671

Intl: 1-903-498-3363

E-mail: sales@larsonelectronics.com

[Scroll Down to Purchase-](#)

[Part #: HALP-48-1L-LED \(64366\)](#)

Options:

HALP-48-1L-LED- MOUNT - VOLTAJE - HUB SIZE

Example: HALP-48-1L-LED-SFC-1227VAC-0.5IN

MOUNT		VOLTAJE		HUB SIZE	
Surface Mount	-SFC	120-277V AC	-1227VAC	1/2in	-0.5IN
Pendant Mount	-PND	12-24V DC	1224VDC	3/4in	-0.75IN









Links (Click on the below items to view):

- [SpecSheet Spanish](#)
- [Dimensional Drawing](#)
- [STEP](#)