
Explosion Proof Light - 250 Watt - 220V - Pedestal Mount - 100 foot Cord with Explosion Proof Plug
EPL-PM-1X300-100-220V



EPL-PM-1X300-100-220V

UL Listing: United States/Canada

Dimensions: 12"-Diam Base 16.75"-H 13.9"-Depth

Weight: 19 Lbs

Total Watts:250

Voltage: 220V-50/60hz

Lamp Lumens: 3030

Lamp Type: R40 Halogen Incandescent

Mounting: Aluminum Circular Pedestal Base

Wiring: 100 feet SOOW Cord ECP 1523 Explosion Proof Plug

Operating Temp Range: T3C Rated

This fixture is being remanufactured under file number E10794.

UL and CSA Certified

Class 1 Groups D

UL Standard: UL 1598, UL 844

UL Listed: E10794

500 hour salt-spray tested. Per MIL-F-8115C

Special Orders- Requirements

Contact us for special requirements

Toll Free: 1-800-369-6671

Intl: 1-903-270-1187

E-mail: sales@larsonelectronics.com

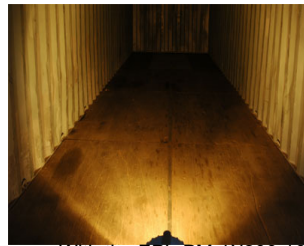
Made in the USA

The EPL-PM-1X300-100-220V Explosion Proof Metal Halide Light is UL Listed Class 1 Group D, and is rated for use in wet and marine environments. The waterproof construction and halogen lamp used with this unit provides operators with excellent power and economy coupled with high versatility and excellent durability.

The EPL-PM-1X300-100-220V Pedestal Mounted Explosion Proof Light provides 3,000 square feet of work area coverage with 3030 lumens of light output. The 250 watt halogen lamp on this unit produces illumination in a wide flood pattern and provides an economical alternative to higher priced light sources. This portable unit is waterproof and tested to 500 hours of salt spray exposure in accordance with MIL-F-8115C Military Specifications.



40' container no illumination



With the EPL-PM-1X300-100-220V



[Click Photo to Enlarge](#)

[Click Photo to Enlarge](#)

[Click Photo to Enlarge](#)



[Click Photo to Enlarge](#)



[Click Photo to Enlarge](#)



[Click Photo to Enlarge](#)

This portable explosion proof light fixture is comprised of a 250 watt halogen light head mounted atop a circular pedestal base. The entire unit is fabricated from cast aluminum and is factory sealed and water tight. This unit requires no external seals, has a built in carrying handle, and the light head can be adusted through 135° of vertical movement. The yoke is formed of high strength aluminum alloy, the lens is thermal shock and impact resistant glass, and the entire housing is formed of cast aluminum with an aluminum enamel coating.

Included with this unit is 100 feet of 16/3 black SOOW (abrasive and oil resistant) cord ending in an ECP 1523 5-15P explosion proof straight blade plug connector. This light operates with standard 220 volts AC 50/60 hz current and draws approximately 1.14 amps.

This lamp is extremely rugged and ideal for use in marine environments where damage due to salt water spray and dampness is an issue.

Made in the USA Quality

1. Thick cast aluminum construction.
2. Thermal shock and impact resistant glass lens.
3. Aluminum alloy yoke.
4. High stability round pedestal base..
5. Factory sealed, no external seals required.
6. 500 hour salt-spray tested. Per MIL-F-8115C.
7. Low Maintenance.
8. Economical halogen lamp reduces relamping costs.
9. Explosion proof cord and plug included.
10. Included carrying handle.

Larson Electronics LLC
9419 E US HWY 175, Kemp, TX 75143
Phone: 800.369.6671



www.LarsonElectronics.com
Email: sales@LarsonElectronics.com
Fax: 903.498.3364

Links (Click on the below items to view):

- [250 Watt Pedestal Mounted Explosion Proof Light](#)
- [DFX](#)
- [EPL-PM-1X300-100-220V Explosion Proof Metal Halide Light](#)
- [large](#)
- [medium](#)
- [Portable explosion proof light operates with standard 220 volts](#)
- [SpecSheetArabic](#)
- [SpecSheetFrench](#)
- [STEP](#)
- [This photo shows the back view of the EPL-PM-1X300-100-220V](#)
- [HigResPic1](#)
- [HigResPic2](#)
- [HigResPic3](#)
- [HigResPic4](#)
- [HigResPic5](#)
- [HigResPic6](#)
- [HigResPic7](#)
- [HigResPic8](#)
- [HigResPic9](#)
- [HigResPic10](#)