

HID Golight Stryker - 35 Watt HID - 3000 Lumen - 2 Wireless Remotes - Chrome - 12 Volt - GL-52883

Part #: GL-52883



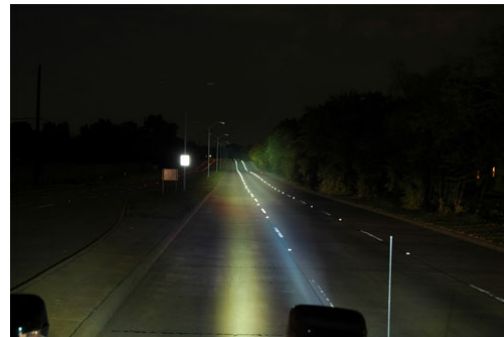
The GL-52883 HID Chrome Golight Stryker from Larson Electronics produces a 3,000 lumen light beam capable of reaching over 5,000 feet in distance. This 35 watt HID Golight offers wireless remote pan and tilt control, dual controllers, and a housing finished in a durable chrome finish. This Golight is weatherproof with weatherproof remote controls and operates with 12 volt DC current.

The GL-52883 HID HID Golight Stryker is designed for use in all weather conditions and produces 3,000 lumens of intense light output. These units feature remote control operation that allows users to rotated the light 370 degrees with a hard stop and to adjust vertical tilt through 135 degrees. Remote operation is provided by two wireless controllers, including one handheld portable remote and one dash mount remote that operate over a radio frequency of 433 MHz. Each remote includes an internal 12 volt battery rated at 1 year of operation and a single red LED to indicate remote control activity. These remotes have a range of up to 100 feet and will operate through walls, within structures, and in vehicles. Each remote is constructed of polycarbonate with rubber push pad buttons for weatherproof durability and can be user programmed to operate one or several lights simultaneously. Handheld remotes are 3 inches long by 2 inches wide by 3/8 inch thick, and dash mount controls are 4 inches long by 2.5 inches wide by 1/2 inch thick.



Halogen Golight illuminating a stretch of road about 5000 feet in length.
Beam loses intensity after 750'.

[Click Photo to Enlarge](#)



HID Golight demonstrating exceptionally more power than halogen.
Golight HID Stryker beam measured to 5,331 feet.

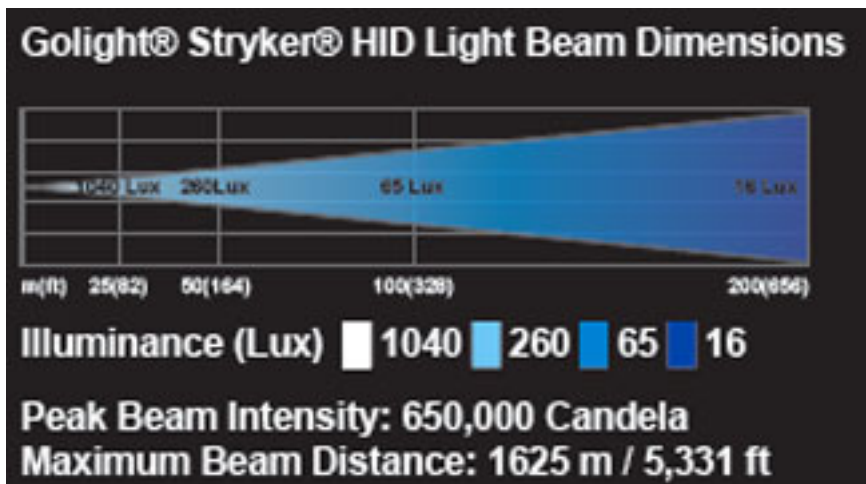
[Click Photo to Enlarge](#)

Remote Operation: Remote control functions include on/off, and 4 buttons which control up, down, left and right movement. The light will continue movement as long as the buttons are depressed. Releasing the buttons stops movement and holds the Golight in position. A fast and slow mode button (turtle/hare) controls the speed of the motor while the pan and tilt function buttons are depressed. Holding the button for 12 seconds in fast mode results in a full 370 degree rotation, and 8 seconds for full tilt. Slow mode is used for pinpoint accuracy at distance and is approximately 35 seconds for full rotation and 20 seconds for one full range of tilt.

Durability: The GL-52883 Golight Stryker is designed for boating, commercial applications, and demanding outdoor use with a weather resistant housing constructed of high quality ASA Luran thermoplastic that is heat resistant, impact resistant, UV resistant and able to withstand rugged use and abusive conditions. This particular Golight Stryker has a durable chrome finish, making it ideal for boating and vehicle applications where an attractive appearance is desired. Also available are white, camouflage, and black finishes. Remote movement of this spotlight is provided by an automotive grade internal motor, gear, and transmission assembly that is constructed of LEXAN, brass, and stainless steel to provide rust and corrosion resistance as well as long life and reliable operation.

Mounting: This light mounts using a detachable design with an included separate permanent mount interlocking stainless steel mounting plate that is affixed to the mounting surface. The mounting plate is attached with 3 screws through predrilled holes which secure the plate to the mounting surface. The Golight Stryker attaches to the mounting plate via an interlocking base bracket and a single machine screw which secures the Golight to the mounting plate. This design simplifies mounting and allows users to easily detach the light from the mounting surface for servicing or storage.

Power: This Golight is connected to power through an included 1 foot pigtail cord and user supplied 16 AWG wire to connect the unit to the battery, fusebox, or to existing wiring. This light operates with 12 volts DC and draws 3 amps after an initial 7.2 amps - 60 second startup amp draw, making it ideal for vehicles, boats, ATVs, and similar sources of 12 volt direct current. We also carry with AC/DC converters which allow you to operate these lights with common household 110-120VAC and use them as security lights.



Light Output: The lamp in this Golight Stryker is a 35 watt high intensity discharge bulb which produces 3,000 lumens, or a 15 million retail candle power rating. This bulb is paired with a tight focus reflector and thick glass lens to produce a narrow spot beam 5,331 feet in length. This lamp has a 4100K color temperature, giving it very good color rendering and contrasting properties and the ability to clearly and sharply illuminate objects at long distances. This beam is effective to the far end of its reach, producing enough illumination to read a book by at 5300 feet.

This high power HID GOLight Stryker is ideal for hunting, security, boating, law enforcement, emergency services, utilities, and anywhere high power and remote control functionality are desired. This unit produces a more powerful and far reaching beam than halogen spotlights and uses less power on a 12 volt system, making it well suited to vehicles and boats where power supply is limited.

Golight Stryker Features

1. Weather Proof Lamp and Remote Controls.
2. Remotes Control Programmable with More than 60,000 Possible Channels. Remotes Can be Programmed to Control One Golight or Several
3. R.F. Frequency, F.C.C., S.A.E. tested and Canada Certified.
4. Remote Control Range up to 100 Feet.
5. Automotive Grade 12 Volt D.C. High Torque Motor.
6. Weatherproof Connectors Meet OEM Vehicle Manufacturer Specifications
7. Meets Marine Standards for Fresh Water and Saltwater Use.
8. 3,000 Lumens, 5,331 Foot Beal Length
9. 12 Volt DC 3 amps Continuous Draw After Startup.

Specifications / Additional Information**GL-52883 HID Chrome Golight Stryker****Lamp Type:** 35 Watt HID Bulb**Dimensions:** 6" W x 6" Depth x 7" H**Weight:** 5 Lbs**Total Watts:** 35 watts**Voltage:** 12 VDC**Lighting Configuration:** Tight Focus Spotlight**Amps:** 3 Amps Continuous - 7.2 Amps for 60 Seconds Startup**Mounting:** Permanent 3 Hole Mounting Plate, Detachable Golight**Wiring:** 1 Foot Long Pigtail**Total Lumens:** 3,000**Lamp Color Temperature:** 4100 Kelvin**Candlepower Retail Rating:** 15 Million- Read More**Candlepower Industrial Rating::** 5 Million- Read More**Weather Rating:** Weatheproof**Warrenty:** 5 Years**Movement Range:** 135°.Tilt - 370° Rotation**Remote Control:** Wireless, Radio Control. 433 MHz

Golight handheld remote control - details and pictures

[5 Year Limited Warranty](#)[1 Year Warranty on Ballast](#)[90 Day Warranty on HID Bulb](#)**[Scroll Down to Purchase-](#)****Superior HID Benefits**

1. Far Longer Bulb Life than Halogen.
2. Higher Color Temperature with Better Color Rendering and Contrasting.
3. More Durable than Halogen. No Filament to Burn Out or Break..
4. High Efficiency, More Light with Less Power Drain.
5. Vibration Resistant
6. High Output.
7. Less frequent Outages, Higher Reliability and Fewer Bulb Replacements.

Summary/Certifications

35 Watt, 3000 Lumen

Remote Control, 100' Range

Meets Marine Standards for Fresh / Saltwater Use.

UV and Weatherproof

12 VDC Operation

Special Orders- Requirements

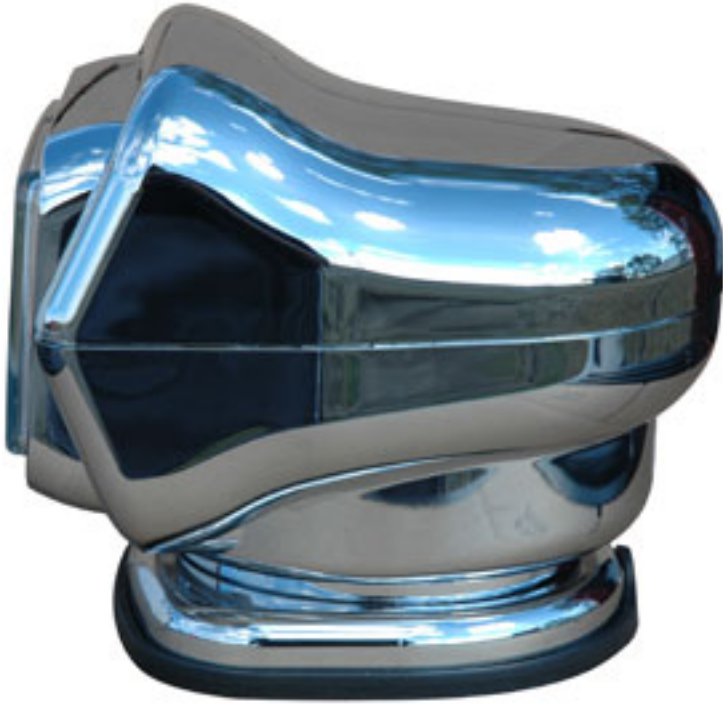
Contact us for special requirements

Toll Free: 1-800-369-6671**Intl:** 1-903-498-3363**E-mail:** sales@larsonelectronics.com

Part #: GL-52883 (47412)







Links (Click on the below items to view):

- [Dimensional Drawing](#)
- [MSDS](#)