

Waterproof Transformer - 120V-277V AC to 12/24V DC - 3.7 Amps Max - (2) Output Leads

Part #: [DCP-3.7-DP-HD-1224](#)



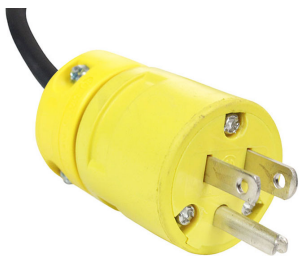
The Larson Electronics DCP-3.7-DP-HD-1224 Waterproof Transformer converts commonly used 120V AC, 220-240V AC and 300V DC electrical current to 12V DC and 24V DC. This converter includes a general-area plug on the input end and two sets of leads for 12V DC and 24V DC connections on the output side. No special modifications are required to utilize the voltage ranges, resulting in quick and seamless power conversion.

The DCP-3.7-DP-HD-1224 provides a safe and effective way for users to tap into and utilize AC power sources and convert this current to 12V DC and 24V DC for use with equipment that requires low voltage DC electrical power. This unit features full range, universal AC input capabilities and can be operated with 88-132V AC @ 50/60 Hz (120V AC), 176-264V AC @ 50/60 Hz (220-240V AC) and 248-373V DC (300V DC). The unit converts AC power input to 12V DC output or 24V DC output at 3.7 amps maximum (combined between the two outputs). This converter comes with a general-area plug on the input lead and two sets of output leads, allowing users to simply plug the unit into a typical AC wall outlet and connect to 12V DC and 24V DC customer-provided equipment. THIS WILL NOT WORK WITH THE HID GOLIGHT SPOTLIGHTS (GL-3XXXH-X models). The small size and wide input voltage range of this unit makes it ideal for operating Larson Electronics LED light bars, Golights and other equipment that requires 12V DC or 24V DC current indoors and anywhere 12V DC or 24V DC power is not readily available.

Durability/Protection: IP67 rated, this unit is waterproof and suitable for indoor or outdoor applications. Integrally designed protection includes overload, short circuit and over voltage safeguards to prevent overheating and unit damage in case of faults or overly heavy current draw. This unit will shut down when an over current fault is encountered and automatically resumes operation once the fault is repaired or removed. When an over voltage condition is encountered the unit will shut down and recover when manually turned back on.

This power converter has a -20°C to +60°C operating temperature range and is UL 1310 Class II and CAN/CSA C22.2 No. 223-M91 rated. The unit has an 85% conversion efficiency and is suitable for use with moving LED signs and similar LED equipment. These units also feature Power Factor Correction.

[Click Photos to Enlarge](#)



5-15 Straight Blade Plug
15 Amp / 125V Rated



L5-15 Twist Lock Plug
15 Amp / 125V Rated



L6-15 Twist Lock Plug
15 Amp / 250V Rated



UK BS1363 Straight Blade Plug
13 Amp / 250V Rated / Internal Fuse



Intl Schuko 2-Pin Plug
16 Amp / 250V Rated / Grounded



Flying Leads / Pigtail Wires

Wiring/Plug: This encapsulated transformer power supply is equipped with 5 feet of 16/3 chemical and abrasion resistant SOOW cord that is fitted with an industrial grade cord cap for easy connection to common wall outlets. Plug options include standard 5-15 15 amp straight blade plug for 110V wall outlets with ground, standard 6-15 15 amp straight blade plug for 220-240V wall outlets with ground, NEMA L5-15 15 amp twist lock plug for 125V twist lock outlets, NEMA L6-15 15 amp twist lock plug for 240V twist lock outlets, British BS1363 13 amp fused 3-blade plug for United Kingdom outlets, or a two pin 16 amp rated Schuko plug with ground contact and socket for European outlets up to 250V. Alternatively, we can provide flying leads with no plug for hard wire applications or for operators who prefer to wire in user provided cord caps. Please choose pigtail option below for flying leads with no plug.

The output side of the transformer contains two sets of output leads. One set is for 12V DC connections and the other set is for 24V DC. Maximum combined capacity between both sets of output leads is 3.7 amps.

Mounting: The DCP-3.7-DP-HD-1224 is mountable on flat surfaces using two conventional screws via slots that allow removal and repositioning simply by loosening the screws. This transformer is enclosed in a weather proof enclosure that is equipped with a handy strap for carrying and/or mounting.

NOTE: In order to obtain the best performance and the longest operational life from these units, it is recommended that you do not exceed 75% of the unit's output amperage. To determine if this converter suits your desired application, add together the total wattage of the equipment you intend to use with this unit and divide this total by 12 volts to find the total amperage draw that will be placed upon the converter. For example, if you are using our LEDP10W-60E 60 watt LED light, 60 watts divided by 12 volts is 5 amps. This would mean the DCP-5 is not suitable as it would run at 100% capacity to produce the necessary 5 amps and run hotter, leading to reduced converter life. Thus, a higher rated converter like our DCP-11-12V would be a better choice.

Applications: Battery charging, battery maintenance and repair, standby/emergency generators, power management, pumps, field engineering, automated systems and more.

At Larson Electronics, we do more than meet your lighting needs. We also provide replacement, retrofit, and upgrade parts as well as industrial grade power accessories. Our craftsmen can custom build any lighting system and/or accessories to fit the unique demands of your operation. A commitment to honesty, quality, and dependability has made Larson Electronics a leader in the lighting and electronics business since 1973. Contact us today at 800-369-6671 or message sales@larsonelectronics.com for more information about our custom options tailored to meet your specific industry needs.

Specifications / Additional Information**DCP-3.7-DP-HD-1224 Battery Charger****Unit Type:** Waterproof Battery Charger**Dimensions:** 7"-L 2.5"-W 1.5"-D**Weight:** -**Input Voltage Ranges:** 88-132V AC @ 50/60 Hz (120V AC), 176-264V AC @ 50/60 Hz (220-240V AC) and 248-373V DC (300V DC)**Output Voltages:** 12V DC and 24V DC**Efficiency:** 85%**Protection:** Short Circuit, Overload, Over Voltage**Max Amps:** 3.7A Combined**Ambient Operating Temp:** -20°C to +60°C**Materials:** -**Mount:** Surface via (2) Screw Slide Notches**AC Input Connector:** 5` 16/3 SOOW Cord w/ Cord Cap**AC Input Cord Cap Options:** 5-15 Straight, 6-15 Straight, L5-15 Twist, L6-15 Twist, UK BS1363, Intl. Schuko or Pigtail**DC Output:** (1) 12V Leads, (1) 24V Leads**Ratings**

IP67 Rated Waterproof

UL1310 Class 2 Rated

CAN/CSA C22.2 No. 223-M91

Special Orders- Requirements

Contact us for special requirements

Toll Free: 1-800-369-6671**Intl:** 1-214-616-6180**Fax:** 1-903-498-3364**E-mail:** sales@larsonelectronics.com[Scroll Down to Purchase](#)

This product does not qualify for free shipping.

Part #: DCP-3.7-DP-HD-1224 (222624)

Options:DCP-3.7-DP-HD-1224- **CORD CAP****Example:** DCP-3.7-DP-HD-1224-5.15

CORD CAP	
5-15 Straight	-5.15
6-15 Straight	-6.15
L5-15 Twist	-L5.15
L6-15 Twist	-L6.15
UK BS1363	-BS1363
Intl Schuko	-Schuko
Pigtail	-Pigtail









Links (Click on the below items to view):

- [Hi-Res Image 1- Power Converter](#)
- [Hi-Res Image 2- Power Converter](#)
- [Hi-Res Image 3- Power Converter](#)
- [Hi-Res Image 4- Power Converter](#)
- [Hi-Res Image 5- Power Converter](#)