

100ft Temporary Construction String Light - Ten LED Work Lamps - 100 Watt LED Stringer - 12/3 SJTW

Part #: WAL-SL-10-LED-12.3-NZ



Made in the USA

The Larson Electronics WAL-SL-10-LED-12.3-NZ Work Area Lighting LED String Light is designed for high output illumination and daisy chain connections across the job site. The 10 watt LED lamps on this this work site light set provide more and higher quality light than 100 wattage incandescent lights while creating less heat and using less power.

This work area string light consists of ten industrial grade LED lamps with 10 feet of 12/3 SJTW cable between each unit, stretching a total of 106" in length. This temporary LED string light is connected to power via an integrated 3 foot cable terminated with a standard 5-15 straight blade plug. Each globe light is equipped with a high output LED bulb which delivers more light output than a 100 watt incandescent. The 10 watt LED bulb draws 10% the electrical power of a standard 100 watt bulb, making it suitable for standard voltage and low voltage applications. Each LED light screws into a molded E26 lamp socket and the bulb is enclosed in a bird cage style plastic guard.

Ten high output A19 style LED lamps producing 1050 lumens per lamp provide a total of 10,500 lumens of bright white illumination. Each lamp housing is constructed from light weight aluminum, and fitted with an impact and shatter resistant polycarbonate diffuser. These LED light bulbs provide additional safety measures and time savings, given the low heat production and that it does not require replacing for 50,000 hours. Since the LED bulb uses solid state technology, the vibration (dropping, etc.) that degrades conventional incandescent bulbs is not an issue with these LED bulbs.



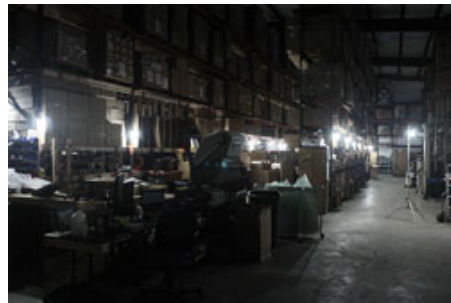
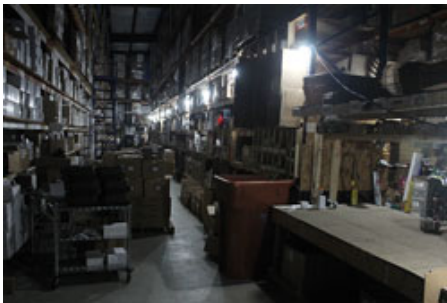
[Click Photo to Enlarge](#)



[Click Photo to Enlarge](#)



[Click Photo to Enlarge](#)



Each light includes a blue plastic mesh guard enclosure that provides protection for the enclosed bulb and a hook eyelet with a S-hook that allows operators to hang these tasks lights overhead. Utilizing energy efficient LED lamps, operators are able to provide more light coverage from the same amp draw, or lower the amp draw using the same amount LED lamps as incandescent. Each LED trouble light has an effective range that approximately covers a 5-8' radius with 10-15 foot candles of light. Unlike fragile incandescent and compact fluorescent lamps that are made from glass, these LED bulbs are extremely durable and can live up to the abuse of harsh working conditions. With a lamp life of 50,000 hours, operators are not constantly having to replace burnt out or broken lamps, reducing down time and lowering the amount of spare lamps required at the job site.

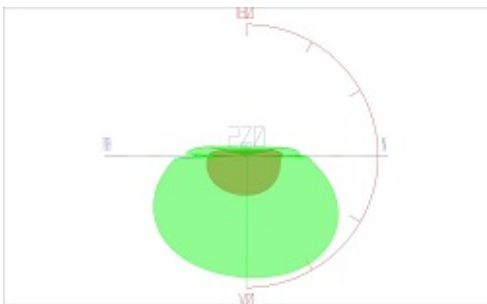
Multiple light stringers can be connected end to end to extend work area illumination. On a 120V power source, a maximum of eight sets of stringers can be daisy chained together. On 24V, one 10-lamp stringer and one 5-lamp stringer can be chained together. There are limits to how many strings can be interconnected based on the overall amp draw, power source, etc.

Stringer Energy Consumption Comparison

	<u>Incandescent</u>	<u>CFL</u>	<u>LED</u>
Wattage	1000 watts	260 watts	100 watts
Amp Draw @ 120V AC	8.34 amps	2.17 amps	0.84 amps
Amp Draw @ 24V DC	41.67 amps	10.84 amps	4.17 amps
Lamp Life Expectancy	1,500 hours	8,000 hours	50,000 hours
Color Temperature	2800K	4300K	6000K
Operation cost per year (8hs/day @ 11c/kWh)	\$321.2	\$83.52	\$32.12

Unlike gas burning and arc type lamps that have glass bulbs, LEDs have no filaments or fragile housings to break during operation. Instead of heating a small filament or using a combination of gases to produce light, light emitting diodes (LEDs) use semi-conductive materials that illuminate when electric current applied and emitting light. With LED lights, there is no warm up time or cool down time before re-striking and provide instant illumination when powered on, adding to the reliability of LED technology. By nature, LED light sources run significantly cooler than traditional lamps, reducing the chance of accidental burns and increased temperatures due to heat emissions. This solid state design of light emitting diodes provides a more reliable, stable, durable, and energy efficient light source over traditional lighting.

The LED lamps from Larson Electronics` are designed for longevity and durability. Many manufacturers offer plastic heat sinks, which will cause the LEDs and drivers to fail prematurely. These LED lamps use high quality cast aluminum heat sinks that have been engineered to properly disperse heat buildup created by the LEDs. This design ensures the LED lamps will continue to operate well after the 50,000 rated lamp life.



[Click Photo to Enlarge](#)

Each high output LED lamp produces more light output than standard 100 watt rough service lamps. The 3D polar distribution curve displays a standard 100 watt rough service incandescent lamp (red) in comparison to the LED-A19-10-E26-SML high output LED lamp (green) that is used in this work area string light. The LED lamp visible covers more than twice ground than the 100 watt rough service lamp, and the higher CRI of the LED lamp provides a better working environment. The cool white color temperature allows operators to see fine details that would not be clearly visible incandescent lighting.

These lights are configured to operate with 120V-277VAC current and are available in an optional 24VDC configuration as well. These LED string lights provide more and better quality illumination than 100 watt incandescent string lights without the high heat and fragile glass construction of traditional lamps. These LED lamps are suitable for wet areas, extremely long lived, resistant to damage from impacts and vibrations, and consume far less energy than standard lamps.

Lamp Features

Superior LED Benefits

1. 10 Watt LED Lamps
2. Outdoor Approved
3. No ballast, no flickering, instant on illumination
4. Blue Cage Plastic Guards for added protection
5. 120-277V AC or 12-28V DC Operation
6. Durable solid state LED construction resists damage from impacts and vibrations.
7. S-Hooks for hanging and hands free operation.
8. 10 feet of 12/3 SJTW cable between each light.
9. End to end operations allows connecting multiple stringers together for maximum work site illumination.
10. Energy efficient alternative to incandescent and compact fluorescent temporary string lights

1. 50,000 hour lifespan.
2. Can SAVE 50% or more on energy.
3. Qualifies retrofit projects for financial incentives, including utility rebates, tax credits and energy loan programs.
4. Reduces energy use and prolongs life-spans of peripheral cooling units (A/C, refrigeration)
5. 100% recyclable.
6. No toxins-lead, mercury.
7. No UV light, infrared radiation or CO2 emissions.
8. Qualifies buildings for LEED and other sustainable business certifications.
9. Bright, even light maintains consistent color over time.
10. Instant on/off – No flickering, delays or buzzing.
11. Very good color rendering.
12. Vibration/impact resistant.
13. Significantly cooler operation.
14. Less frequent outages, higher output improves workplace safety.

Specifications / Additional Information

WAL-SL-10-LED-12.3-NZ String Lights

Lamp Type: LED

Lamp Quantity: 10

Lamp Watts: 10 Watts

Total Watts: 100 Watts

Lumens: 10,500 (1,050 per lamp)

Luminous Efficiency: 105 Lm/W

LED Lamp Life Expectancy: 50,000+ Hours

Voltage: 120V AC or 11-25V AC/DC

Amp Draw (Single Unit): 0.08

Total Length Per Unit: 106`

Wiring: 10` 12/3 SJTW Cable Between Each Lamp, 3` Whips

Cord Caps: 5-15P and 5-15C

Mounting: Hook Eyelet w/ S Hooks

Shipping Dimensions: 17" x 18" x 13"

Shipping Weight: 25 lbs

Warranty: 3 Years*

Features

Low Amp Draw

Wet Area Approved

High Output 10 Watt LED Lamps

Daisy Chain Connection(End to End)

Spans total length of 106`

10,500 Lumens of Total Illumination

50,000+ Hour LED Lamp Life

(1) S-Hook per Lamp for Easy Hanging

ETL Listed

Special Orders- Requirements

Contact us for special requirements

Toll Free: 1-800-369-6671

Intl: 1-903-498-3363

E-mail: sales@larsonelectronics.com

[Scroll Down to Purchase-](#)

[This product does not qualify for free shipping.](#)

[Part #: WAL-SL-10-LED-12.3-NZ \(105609\)](#)

Options:

WAL-SL-10-LED-12.3-NZ- **VOLTAGE**

Example: WAL-SL-10-LED-12.3-NZ-1227

VOLTAGE	
120V AC	-1227
11-25V AC/DC	-1224









Links (Click on the below items to view):

- [Hi-Res Image 1 - 100ft Temporary Construction String Light](#)
- [Hi-Res Image 2 - 100ft Temporary Construction String Light](#)
- [Hi-Res Image 3 - 100ft Temporary Construction String Light](#)
- [Hi-Res Image 4 - 100ft Temporary Construction String Light](#)
- [Hi-Res Image 5 - 100ft Temporary Construction String Light](#)
- [Hi-Res Image 6 - 100ft Temporary Construction String Light](#)
- [Hi-Res Image 7 - 100ft Temporary Construction String Light](#)