

**Explosion Proof LED Aluminum Drop Light - Class 1 Div 1 - 50' Cord - Low Voltage AC or DC**

Part #: EPL-FL1524-LED-LV-50

**Made in the USA**

The Larson Electronics EPL-FL1524-LED-LV-50 Hazardous Area LED Work light is F.M. approved Class 1 Division 1 & 2. With a 2 foot long 15 watt LED tube lamp, this hazardous location light provides higher quality light than higher wattage incandescent lights and more light than previous fluorescent lamp equipped models. This light is suitable for exposure to vapors and dusts and ideal for use in paint spray booth inspections or as general portable lighting in confined spaces like fuel tanks or grain storage areas.

This 2 foot long, 15 watt, explosion proof LED work light comes complete with a 50 foot long explosion proof cord for long range and convenient operation. This hazardous location area light features a rugged, non-sparking aluminum casing and unique rod cage and produces cool, glare-free, shadowless light that improves safety in hazardous locations and maximizes lighting efficiency with built-in metal reflectors. These LED lights improve on the desirable qualities of similar fluorescent models with higher output and better light quality and are ideal for paint booth applications, storage container inspections and applications involving confined spaces such as tank cleaning and industrial container maintenance.

The high light output, good light color and evenness of coverage makes these lights ideal for a wide variety of close quarter work and inspection activities. These lamps can operate with voltages of 11-25V AC/DC.



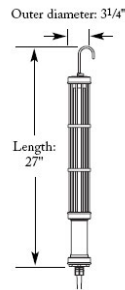
40' Container Dark



[Click Photos to Enlarge](#)



Container With EPL-FL1524-LED

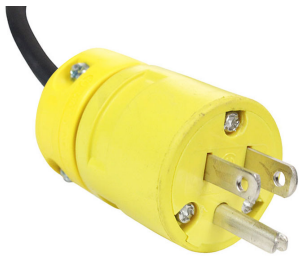


[Click Photos to Enlarge](#)

The 15-watt LED lamp used in this unit provides as much illumination as higher-wattage incandescent lamps without the associated heat, reducing the chances of accidents or burns. This lamp has no ballast, which reduces lamp weight, an impact resistant tube shield with specially designed annealed glass and an aluminum hook for easy overhead mounting. The 50 foot long Class 1, Division 1 rated SOOW 16/3 AWG cord and explosion proof slip-ring housing help this unit to achieve approval for use in environments containing flammable vapors and combustible dusts. This explosion proof fluorescent hand lamp can be used within hazardous locations rated Class 1 Division 1 and 2, and Class 2 Division 1 and 2, making it ideal for hazardous work areas where a ready source of easily managed lighting is desired.

**Voltage:** The drivers in this unit provide the ability to automatically monitor and adjust input current to maintain the correct LED voltage levels regardless of input levels across a specific range. These drop lights can operate on current ranging from 11-25V AC/DC without any modifications necessary as a result. This ability to sense and adjust input current also provides protection against voltage spikes and drops that can occur in electrical systems which would otherwise result in burning up or premature LED failure without it.

[Click Photos to Enlarge](#)



**5-15 Straight Blade Plug**  
15 Amp / 125V Rated



**L5-15 Twist Lock Plug**  
15 Amp / 125V Rated



**L6-15 Twist Lock Plug**  
15 Amp / 250V Rated



**UK BS1363 Straight Blade Plug**  
13 Amp / 250V Rated / Internal Fuse



**Intl Schuko 2-Pin Plug**  
16 Amp / 250V Rated / Grounded



**Flying Leads / Pigtail Wires**

**Wiring and Plug:** This explosion proof LED drop light is equipped with 50 foot of 16/3 chemical and abrasion resistant SOOW cord that is fitted with an industrial grade cord cap for easy connection to common wall outlets. Plug options include standard 5-15 15 amp straight blade plug for 110V wall outlets with ground, standard 6-15 15 amp straight blade plug for 240V wall outlets with ground, NEMA L5-15 15 amp twist lock plug for 125V twist lock outlets, NEMA L6-15 15 amp twist lock plug for 240V twist lock outlets, British BS1363 13 amp fused 3-blade plug for United Kingdom outlets, or a two pin 16 amp rated Schuko plug with ground contact and socket for European outlets up to 250V. Alternatively, we can provide flying leads with no plug for hard wire applications or for operators who prefer to wire in user provided cord caps. Please choose

pigtail option below for flying leads with no plug.

**Lamp Features**

2 foot 15 watt LED Tube Lamp 50,000 hour service life  
Non-sparking aluminum housing  
No Ballast  
Molded rubber bumper guards  
Annealed glass tube shields prevent shattering  
Integrated lamp shock absorbers prevent drop damage to bulbs  
Swivel hook for hanging and hands free operation  
Explosion proof cord

**Specifications / Additional Information****EPL-FL1524-LED-LV-50 Work Light**

**Listing:** United States

**Dimensions:** 27"-L x 3.25"-Dia

**Weight:** 14.5 lbs

**Voltage:** 11-25V AC/DC

**Total Watts:** 15 watts

**Lumens:** 1450

**Luminous Efficacy :**96.67 lm/w

**Lamp Life:** 50,000+ Hours

**Lamp Color:** 5,600K

**CRI:** >75 White

**Power Efficiency:** >95%

**Power Factor:** 0.992

**Lamp Lengths:** 2 Foot

**Material:** Rubber / Copper Free Aluminum

**Mounting:** Handheld / Aluminum Hook

**Wiring:** 50' 16/3 AWG SOOW Cable

**Cord Cap:** 5-15, 6-15, L5-15, L6-15, BS1363, Schuko, or Pigtail

**F.M. Approval:** [U.S Certificate](#)

**Warranty:** Yes - 3 Years

**Ratings/Approvals**

Class 1, Division 1 & 2 for Group D

Class II, Division 1 Groups E, F, G

Class III, Division 1 & 2

**Special Orders- Requirements**

Contact us for special requirements

**Toll Free:** 1-800-369-6671

**Intl:** 1-903-498-3363

**E-mail:** sales@larsonelectronics.com

[Scroll Down to Purchase-](#)

[Part #: EPL-FL1524-LED-LV-50 \(70354\)](#)

**Options:**EPL-FL1524-LED-LV-50- **CORD CAP****Example:** EPL-FL1524-LED-LV-50-5.15

CORD CAP	
5-15 Straight	-5.15
6-15 Straight	-6.15
L5-15 Twist	-L5.15
L6-15 Twist	-L6.15
UK BS1363	-BS1363
Intl Schuko	-Schuko
Pigtail	-Pigtail





Links (Click on the below items to view):

- [STEP](#)
- [DXF](#)
- [Hi-Res Image 1](#)
- [Hi-Res Image 2](#)
- [Hi-Res Image 3](#)