

Explosion Proof LED Light - 4 Foot, 2 Lamp – Class 1 & 2 Division 1 - Pendant and Surface Mount Instruction Manual

WARNING: Do not attempt installation until you are familiar with all warnings, precautions, and procedures outlined within this instruction sheet.

INSTALLATION PRECAUTIONS

- Do not install fixture in any classified location where the marked operating temperature exceeds the ignition temperature of the hazardous atmospheres.
- Consult fixture nameplate for the suitability ambient temperature shown on the nameplate.
- Refer to fixture nameplate for minimum supply wire temperature rating.
- Verify that the supply voltage agrees with fixture rating as indicated on nameplate.
- All local and national electrical/building codes must be followed when installing this lighting fixture. For code interpretation, consult your local authority.
- Product must be used only with glass tubes intact and all cap threads fully engaged. Do not use if glass tubes are cracked or damaged.

Caution: Only use lamp size, type and /or wattage as shown on fixture nameplate.

INSTRUCTIONS FOR INSTALLING

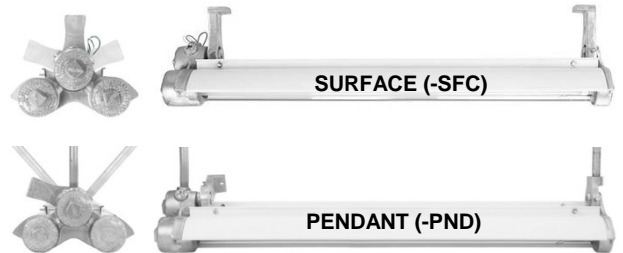
We strongly recommend that only a licensed electrician install this product.

WARNING: Make sure that the power is disconnected before installing. This fixture is extremely heavy and must be mounted to a surface that can structurally support the load.

NOTE: This fixture requires a minimum of 50 inches of clearance from re-lamp end for lamp replacement. An optional drop mounting kit that will allow for end to end row mounting is available, please consult factory.

WARNING: Do not let fixture hang on one bracket at any time. Failing to comply can result in breakage of end casting or mounting bracket, allowing the fixture to fall, which can cause serious injury or death.

- The mounting brackets are shipped installed on the fixture.
- Install the brackets to wall or ceiling with two 3/8" bolts (not supplied) at center measurements.
- Fixture is now ready for mounting.
- For pendant mounts, see reference image.



It is strongly suggested to use two licensed electricians to proceed with the final mounting of the fixture to avoid any possible personnel injury or damage to the fixture as the unit weights up to 46lbs (21.0 kg) and will be slightly awkward to hold in position and attach to brackets mounted on wall or ceiling. Depending on mounting height and scaffolding, a hydraulic man-lift or two good quality ladders should be used.

INSTRUCTIONS FOR WIRING LAMP



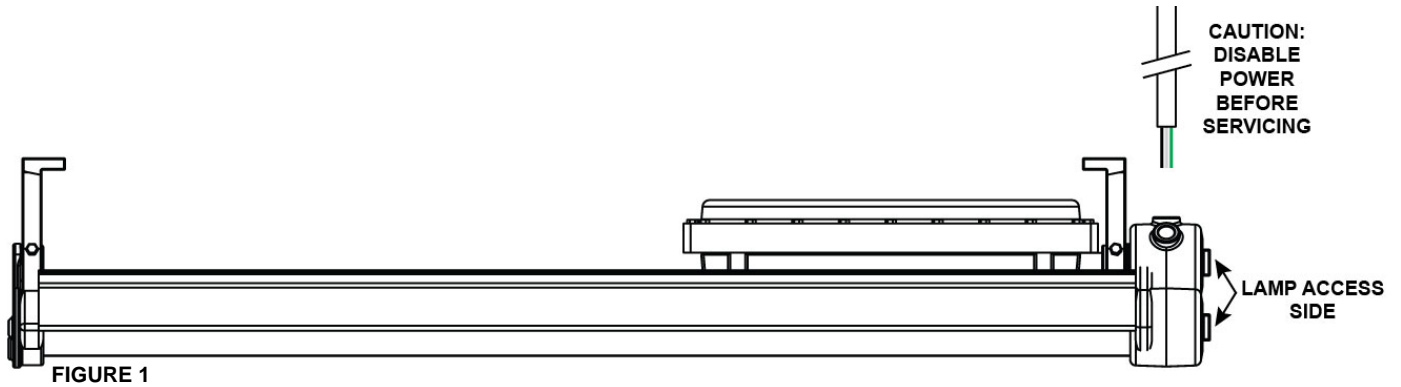
- Remove the upper center screw cap on the re-lamp end (field wiring compartment).
- Install approved cable connector or conduit fitting into 1/2" NPT hub on field wiring compartment.
- Install a three conductor cable into the connector, allowing 3 inches of wire inside compartment for connection.
- Using approved wire connectors, splice wires as per color codes: black to black (line) white to white (common) and green to green (ground).
- Replace end-cap, making sure there are no wires protruding that may be pinched causing a possible short circuit.

WARNING: Fixture must be grounded as required per paragraph 410-21 and article 250 of the National Electric Code and/or rule 30-500. Failure to properly ground this fixture will create an electrical shock, which can cause serious injury or death.

INSTRUCTIONS FOR RELAMP

⚠WARNING

- ▶ To avoid risk of fire, explosion or electric shock, this product should be maintained by a qualified electrician only, in accordance with all applicable codes and regulations.
- ▶ To avoid electric shock: Be certain electrical power is OFF before and during maintenance.



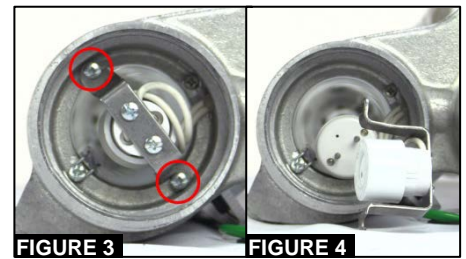
Caution: Only use lamp size, type and/or wattage as shown on fixture nameplate.

1. Disconnect power to the fixture prior to servicing. **FIGURE 1**

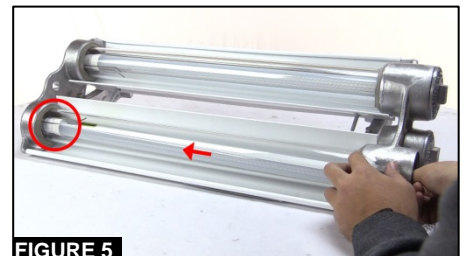
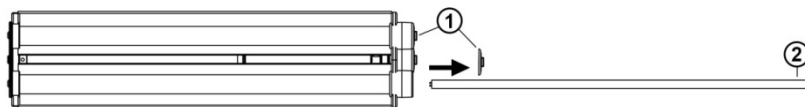
2. With a wrench, remove end-cap (lamp access cover) for the lamp you wish to replace. Rotate counter-clockwise. **FIGURE 2**



3. Loosen the two lamp holder bracket screws holding the old lamp. **FIGURE 3** Twist and remove the lamp holder bracket. **FIGURE 4**



4. Remove the old lamp and install the new lamp, seating lamp in opposite lamp holder. **FIGURE 5**



5. Replace lamp holder into position on the lamp. Twist slightly to place the lamp holder bracket under screw heads and tighten the screws. **FIGURE 3**

6. Reattach end-cap. Rotate clockwise. **FIGURE 6**

